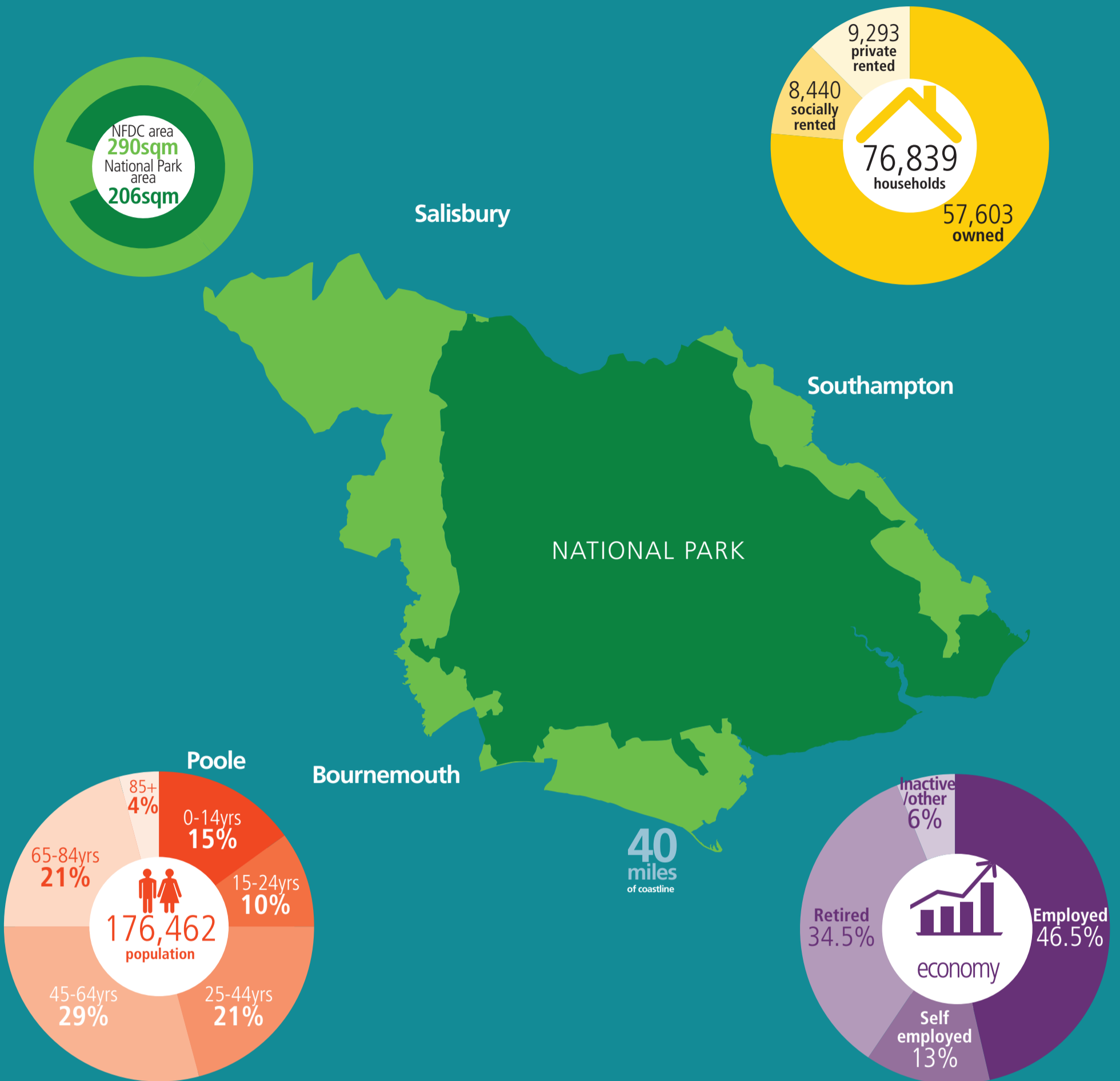


Our corporate plan

2016 - 2020

New Forest District is a unique and special place, to live, work, visit, and enjoy

OUR PLACE



OUR VISION AND PRIORITIES

To secure a better future for the New Forest by:

- Supporting local businesses to prosper for the benefit of the community
- Assisting the wellbeing of those people who live and work within the district
- Protecting the special and unique character of the New Forest

Our priorities:



Underpinned by:



OUR VALUES

We will be **ambitious** in our desire to work for and with our local communities. We are **financially responsible** with the public funds made available to us and we will be **innovative** and **customer focused** in how we improve outcomes for our community. We will be **collaborative** in our working, and are **proud** to work for and with others to represent the best interests of our unique and special place. We will be **open** in our approach and with our plans to deliver our aims and priorities.

You can read how we are delivering these aims in our Delivery Plan newforest.gov.uk