



**Summary Notes  
of NFDC Coastal Group's  
research relating to the  
Lymington saltmarshes**

**Andrew Colenutt  
Coastal Projects Officer**

**[andrew.colenutt@nfdc.gov.uk](mailto:andrew.colenutt@nfdc.gov.uk)**

**Tel. 023 8028 5818**

*NFDC Coastal Group*  
[www.nfdc.gov.uk/coastal](http://www.nfdc.gov.uk/coastal)

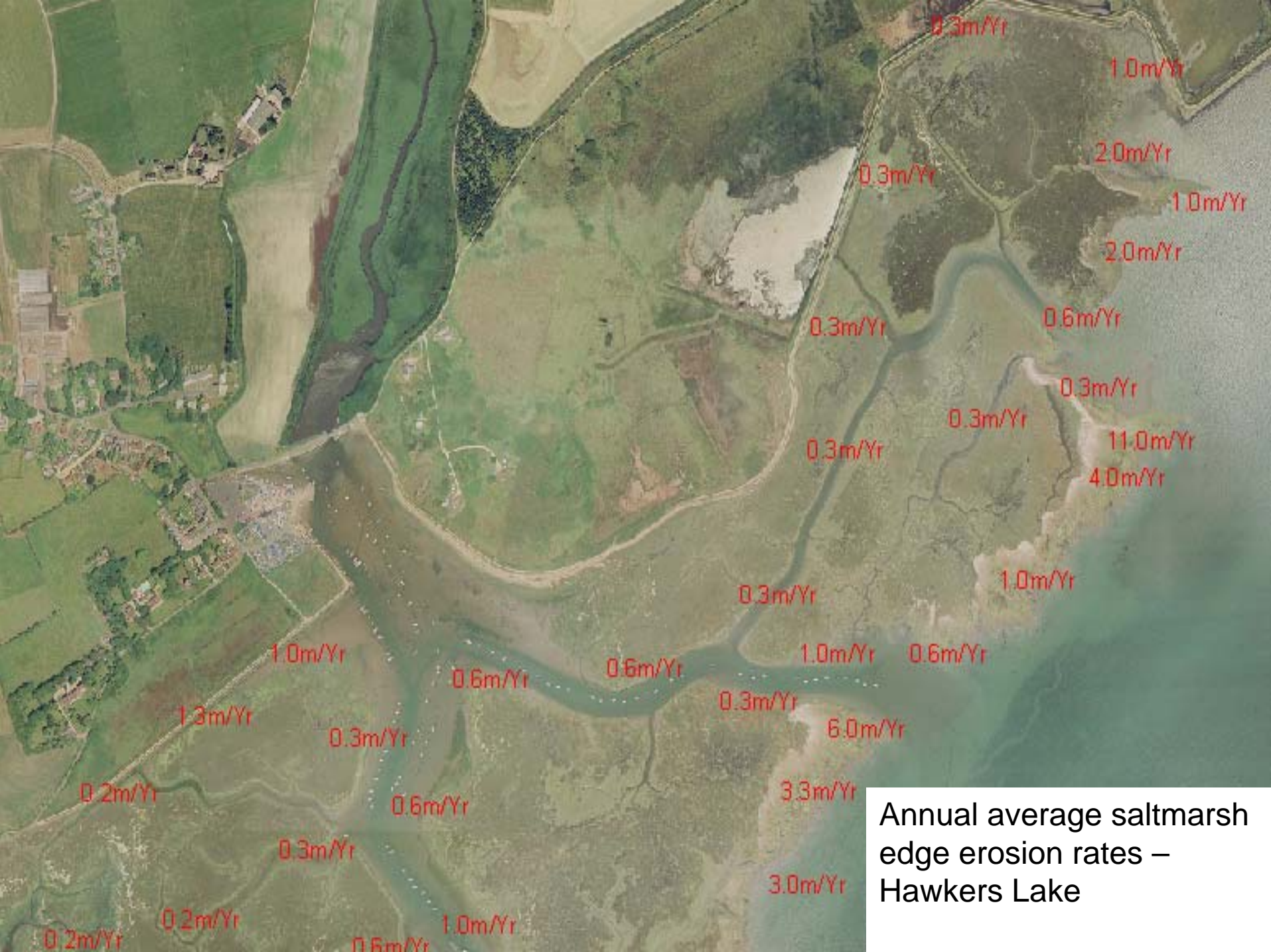


*Channel Coastal Observatory*  
[www.channelcoast.org](http://www.channelcoast.org)



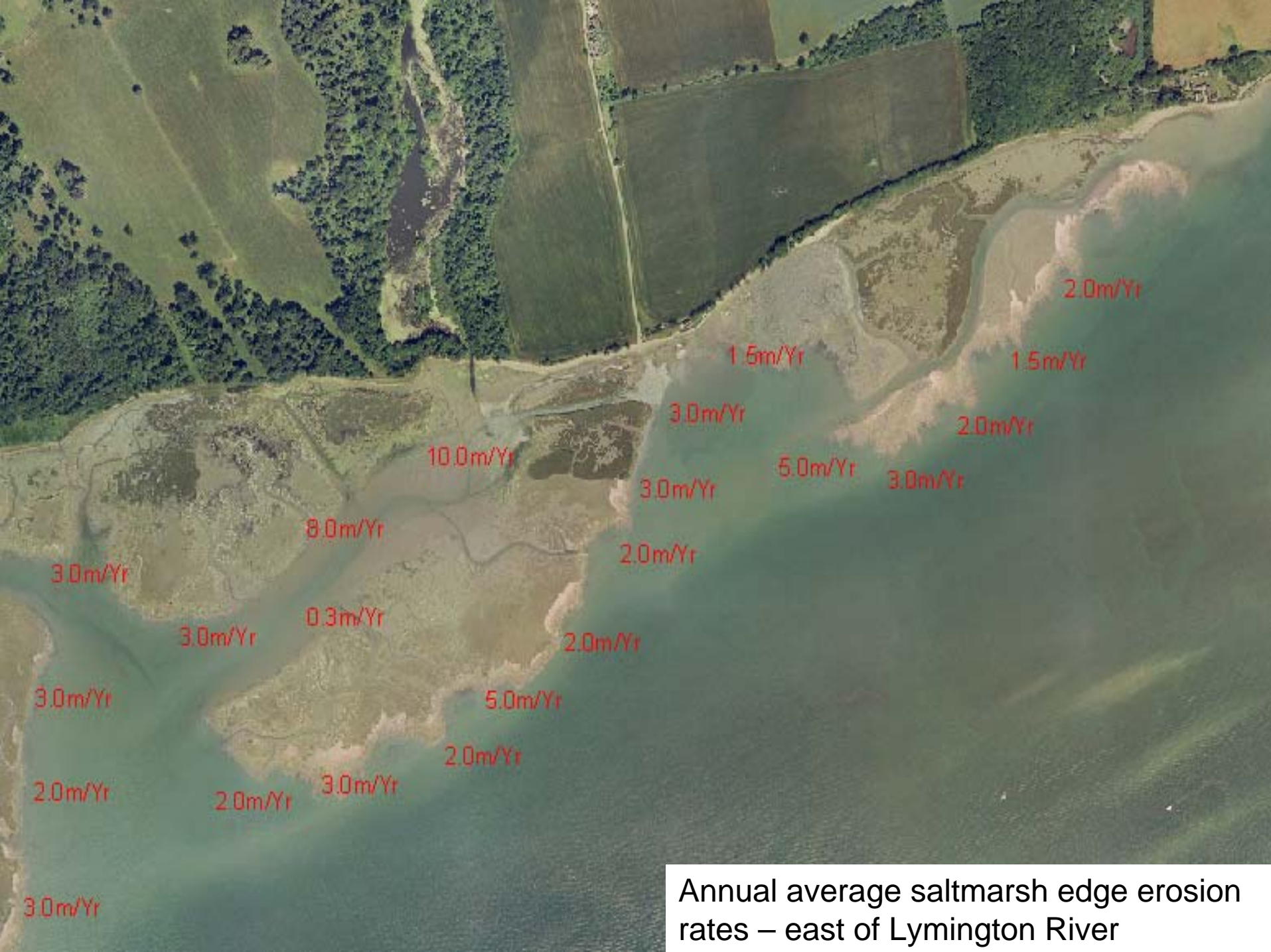


Annual average saltmarsh edge erosion rates – Keyhaven River

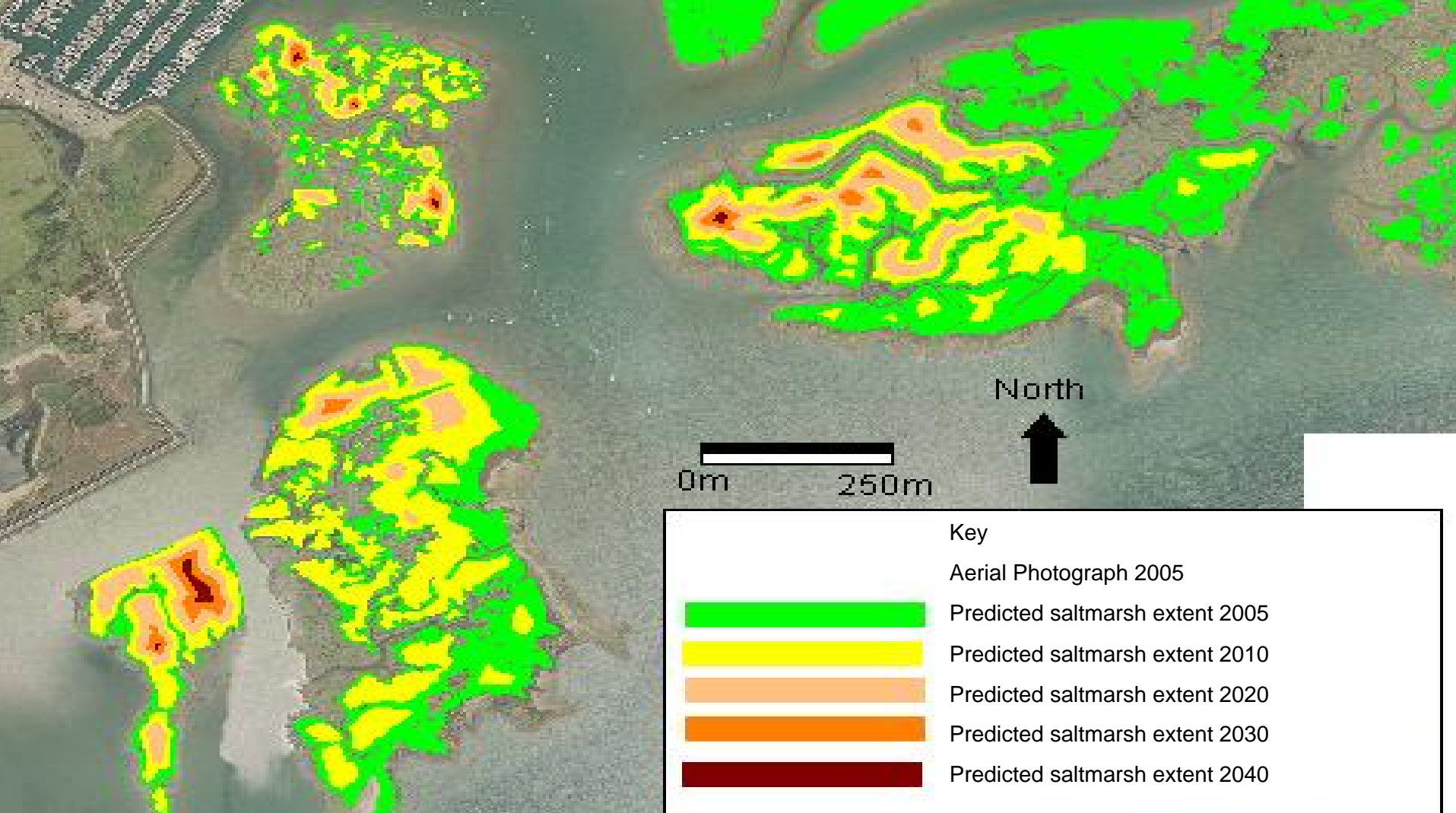


Annual average saltmarsh edge erosion rates – Hawkens Lake





Annual average saltmarsh edge erosion rates – east of Lymington River



The extent of the vegetation and drainage channels has also been mapped. Extrapolation of these data have enabled predictions on the indicative effective life expectancy for the saltmarshes at the mouth of the Lyminster River to be produced, which assumes the rate of loss remains constant. Results indicate that by 2030 the effectiveness of these natural flood defences would be limited, and the saltmarshes would have disappeared by about 2050.